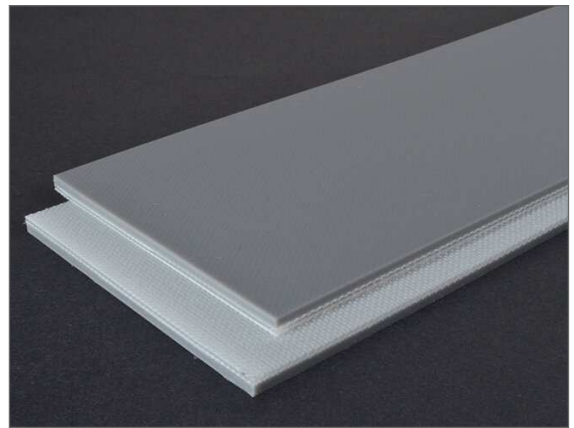




41A New London Tpke  
Glastonbury, CT 06033  
Tel 800-558-7080  
sales@tideindustrial.com  
www.tideindustrial.com

## CONVEYOR BELT

<b>Type</b>	<b>Sticky Top Belt</b>
P/N	3-1600
Description:	P2GY Mono-Grip-S 8M/7P/ZP
Color:	Gray
Nominal OAG:	0.145" +/- 0.03"
Plies:	2 Ply
Fabric:	Monofilament
Min Pulley Dia:	2"
Top Surface:	Low Durometer PVC
Bottom Surface:	Bare
Compound:	PVC
Work Tension:	100 lbs PIW
Elongation:	Less than 2%
Weight PIW/FT:	.072 lbs
Rec Temp Range:	20F to 180F



**Features:** 3-1600 belt features a low durometer PVC top cover providing a "sticky" carrying surface. This belt has a 2 ply monofilament carcass and can travel at high speeds with low noise. It is also known as a 'Sticky Top' belt, is cross rigid, and non-marking.

**Uses:** Popular belt used in package handling, manufacturing, post office applications. It is a high traction belt for moderate incline. Powerturn suitable, sliderbed suitable.

*\* The data contained here are approximate values dependent on belt dimensions, application and environment and is for reference only. It is believed to be reliable, but no representations, guarantees or warranties of any kind are made to its accuracy or suitability for any particular purpose. It is recommended that users conduct their own evaluations for the intended application.*